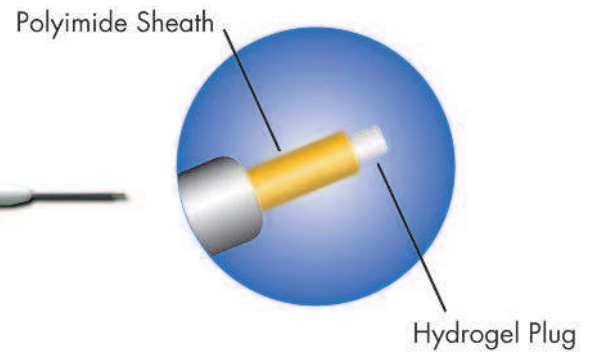


FORM FIT®



ONE SIZE. ONE SOLUTION.

Form Fit is truly a one size plug solution. Once inserted into the canaliculus, Form Fit hydrates over a 10 minute period. As it hydrates, Form Fit increases in size until it completely fills the vertical canalicular cavity.

HOW IT WORKS

Form Fit is made of a hydrogel material that expands into a soft, pliable, gelatinous material when it contacts tear film. It takes approximately 10 minutes for the plug to become completely hydrated.

Form Fit securely conforms to the punctal cavity so there is no need for a cap or anchor system on the end of the plug. This greatly increases patient comfort and decreases foreign body sensation.

Form Fit does not begin to swell until it makes contact with tear film reducing the potential for product waste. Form Fit is made from a hydrogel material that is safe and biocompatible.

BUSINESS SENSE

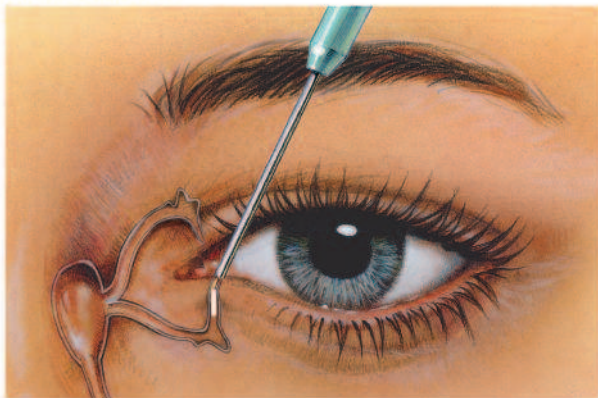
- Form Fit requires no special storage and reacts consistently every time.
- Plug inventory is reduced as multiple plug sizes are no longer necessary.
- Removing the need for measurement provides quicker exam time.
- Form Fit expands beyond other intracanalicular plug diameters.

PRODUCT FEATURES

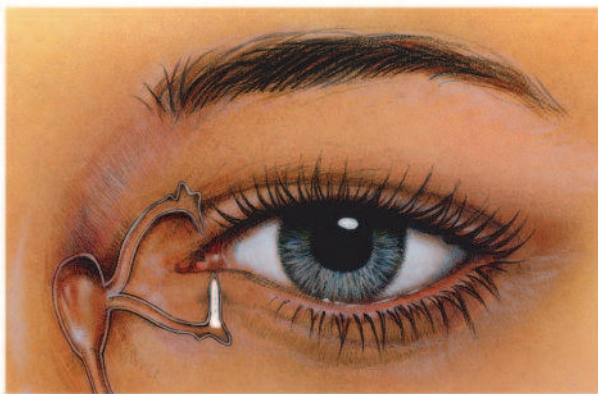
- Hydrates over a period of 10 minutes
- Expands to softly fit the individual's punctal cavity without overstretching the tissue
- Eliminates the cap and anchor system traditionally seen (silicone plugs)
- Easily removed via irrigation of the tear duct
- Biocompatible
- No foreign body sensation
- Conveniently pre-loaded on a user-friendly inserter
- Sizing of punctum is eliminated

Patent #5,116,371

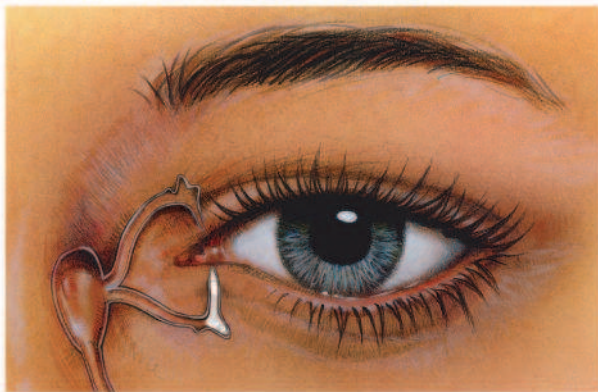
INSERTION



IMMEDIATELY AFTER INSERTION



10 MINUTES AFTER INSERTION



INSERTION OF THE FORM FIT

Form Fit is easily inserted into the canaliculus. Form Fit comes pre-loaded on a user-friendly inserter. The polyimide sheath is inserted into the punctum and the inserter handle compressed to expel the hydrogel plug. Once the hydrogel plug is expelled, maintain pressure on the inserter handle to remove the polyimide sheath from the punctum.

In its dry state, the plug measures 0.3mm in diameter by 3.0mm long. Form Fit easily slides into the punctal cavity. The need for punctal measurement has been eliminated. Form Fit then swells to form a gelatinous material.

REMOVAL OF THE FORM FIT

To remove Form Fit, simply flush saline solution through the punctal opening and the gelatinous material will be expressed through either the nasal cavity or down the throat.

REF #	DESCRIPTION	SIZE	QUANTITY
6303	Hydrogel Intracanalicular Plug	One Size Fits All	10 Plugs/Box
6303-T	Hydrogel Intracanalicular Plug	One Size Fits All	2 Plugs/Box